

Quality Irrigation Products



ISO 9001:2015
Certified
Quality Management



ANSI National Accreditation Board
ACCREDITED
ISO/IEC 17021-1
MANAGEMENT SYSTEMS
CERTIFICATION BODY

UMC is a ISO 9001:2015
Certified Company

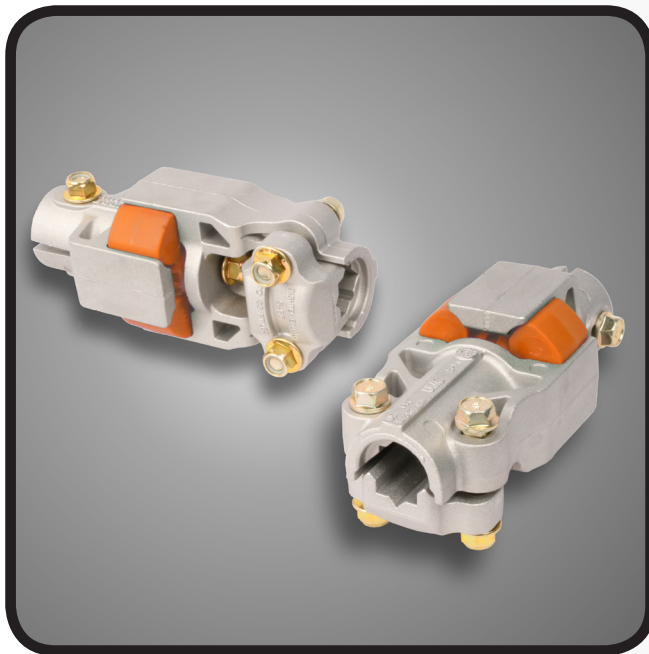


IRRIGATION
POWERTRAIN

www.umcproducts.com

2920 Airway Ave, Costa Mesa, Ca. 92626
phone: 714.437.9600 fax: 714.437.9700

Driveline Couplers



CX™ Coupler

Universal driveline coupler designed to save installation time and deliver higher performance

The patented UMC® CX™ Coupler is a universal shock-attenuating drive connection between the center drive gear motor and final drive gearbox. The CX™ design reduces installation time and it is a must-have service part because this one coupler fits all brands of center pivots and lateral / linear irrigation systems.

Part Number	Description
01355-133A	1" Round x 3/4", 7/8" or 1" Square

Features and Benefits

UMC®'s patented CX™ coupler fits a 3/4", 7/8", and 1" drive shaft as well as metric sizes. It comes pre-assembled and is purpose built to save installation time and deliver higher performance.

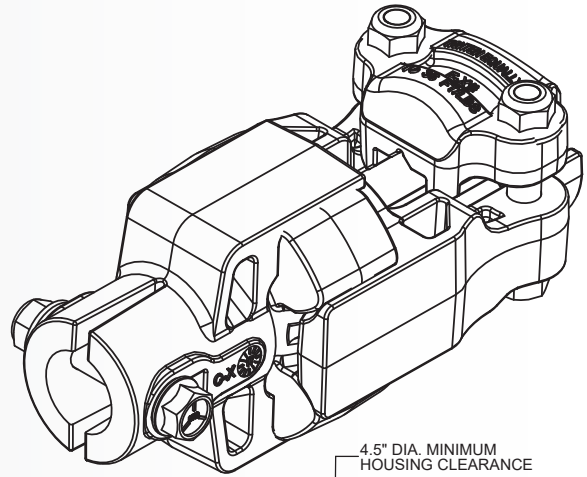
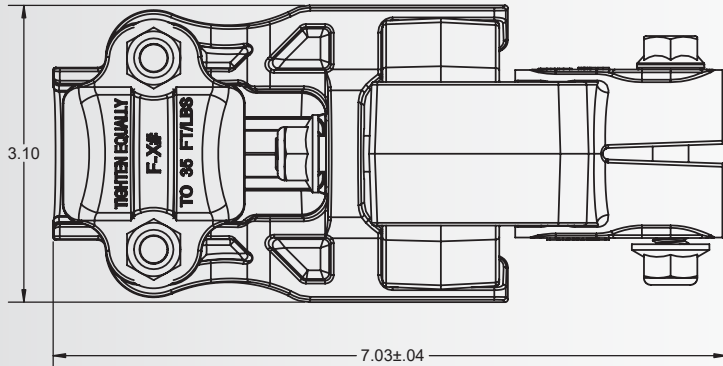
- ▶ Designed to fit the most common imperial and metric drive shaft sizes
- ▶ Pre-assembled to save installation time
- ▶ High strength drive shaft saddle allows for installation with an impact wrench without breaking the saddle
- ▶ Drive shaft orientation enables centering of both 3/4" and 7/8" drive shaft sizes allowing for concentric rotation, extending the life of the puck insert
- ▶ UV stabilized urethane puck dampens center drive start up torque, extending final drive gearbox life
- ▶ Alignment bolt holds insert in place and maintains alignment under extreme loads
- ▶ UMC® SQUEX-Bolts (Square Neck - Hex Head) for easy one wrench installation

sales@umcproducts.com

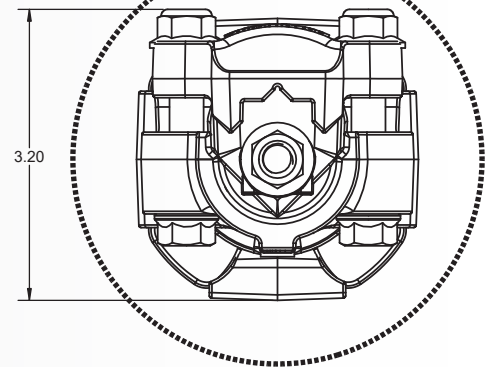
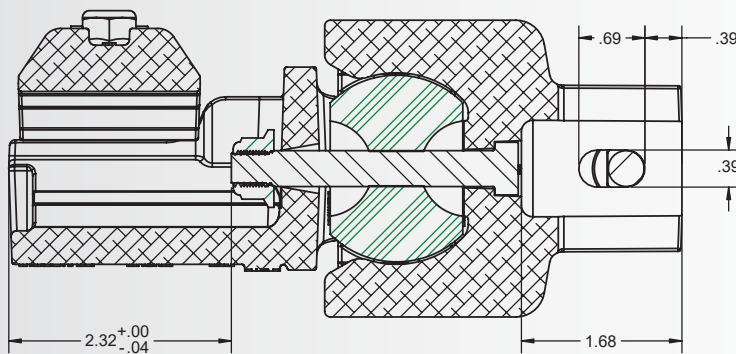
Universal Motion Components®

Dimensional Drawing

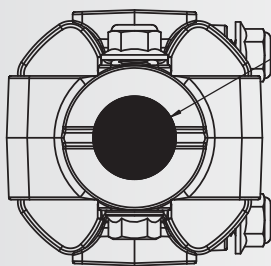
CX Pre-Assembled Driveline Coupler



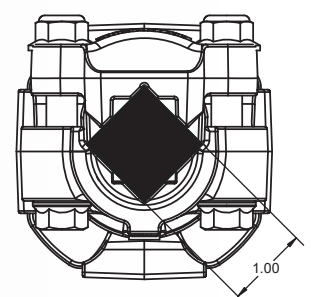
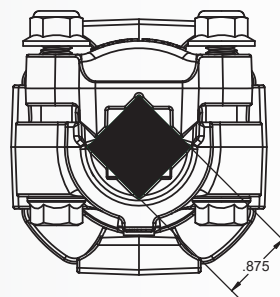
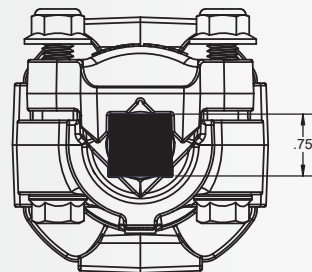
4.5" DIA. MINIMUM HOUSING CLEARANCE



STANDARD 1" ROUND SHAFT FIT:



STANDARD SQUARE SHAFT FITS:



UNIVERSAL
MOTION
COMPONENTS



www.umcproducts.com



sales@umcproducts.com

Universal Motion Components, Co. Inc.
2920 Airway Ave, Costa Mesa, Ca. 92626
Phone - 714-437-9600 Fax - 714-437-9700
Web - <http://www.umcproducts.com>
E-mail - sales@umcproducts.com